
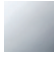
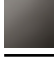

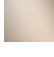



36 503 985



- cover plate 120 x 120 mm
- temperature control handle with safety limit stop at 38°C
- thermostat cartridge

Fits: IMO, MEM, CL.1, CYO

|  |                               |               |
|--|-------------------------------|---------------|
|   | Brushed Platinum              | 36 503 985-06 |
|   | Chrome                        | 36 503 985-00 |
|   | Platinum                      | 36 503 985-08 |
|   | Dark Chrome                   | 36 503 985-19 |
|   | Brushed Durabrass (23kt Gold) | 36 503 985-28 |
|   | Matte Black                   | 36 503 985-33 |
|   | Brushed Champagne (22kt Gold) | 36 503 985-46 |
|   | Champagne (22kt Gold)         | 36 503 985-47 |
|   | Brushed Chrome                | 36 503 985-93 |
|  | Brushed Dark Platinum         | 36 503 985-99 |

**Required miscellaneous**



**xTOOL Concealed thermostat module without volume control -** 35 503 970 90  
 •max. recess depth 160 mm  
 •min. recess depth 95 mm

**Recommended miscellaneous**



**xGRID Attachment set for integrating in the dry wall construction -** 12 340 970 90

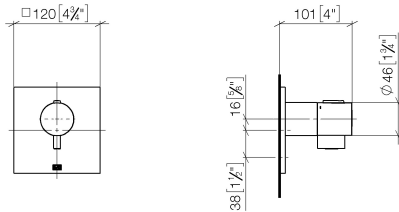
**Required miscellaneous**



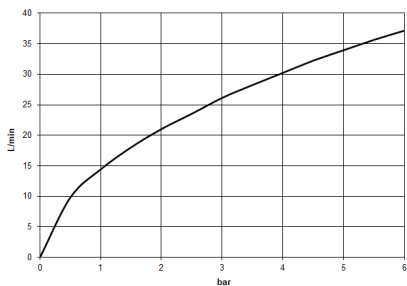
**xGRID Installation track 555 mm -** 12 360 970 90

36 503 985

mm [inches]



Flow rate chart



3551197090 + 36503xxx-FF + 366x7xxx-FF

Certificates

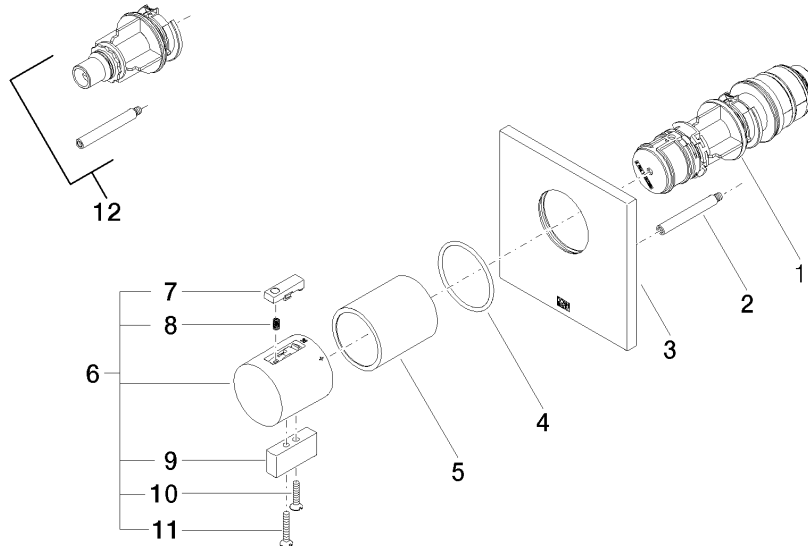
WRAS\_2011026.

DVGW\_DW-  
6512DN0706.

LGA\_29930.

LGA\_29932.

36 503 985



### Spare parts list

| No. | Item Number        | Name              | Quantity used | Delivery time |
|-----|--------------------|-------------------|---------------|---------------|
| 1   | 90 15 02 065 00 90 | cartridge         | 1             | 2             |
| 2   | 90 31 09 095 00 90 | bar               | 1             | 2             |
| 3   | 09 11 02 196-06    | cover             | 1             | 60            |
| 4   | 90 14 10 049 00 90 | seal              | 1             | 2             |
| 5   | 90 21 02 112 00-06 | sleeve            | 1             | 10            |
| 6   | 04 17 33 006 00-06 | handle            | 1             | 60            |
| 7   | 90 21 33 011 00-13 | handle            | 1             | 2             |
| 8   | 90 16 02 027 00 90 | spring            | 1             | 2             |
| 9   | 09 20 33 006-06    | handle            | 1             | 10            |
| 10  | 09 30 30 159-06    | screw             | 1             | 10            |
| 11  | 09 30 30 160-06    | screw             | 1             | 10            |
| 12  | 12 178 970 90      | Extension 46 mm - | 1             | 2             |